



Datenblatt - Fiche technique - Data sheet

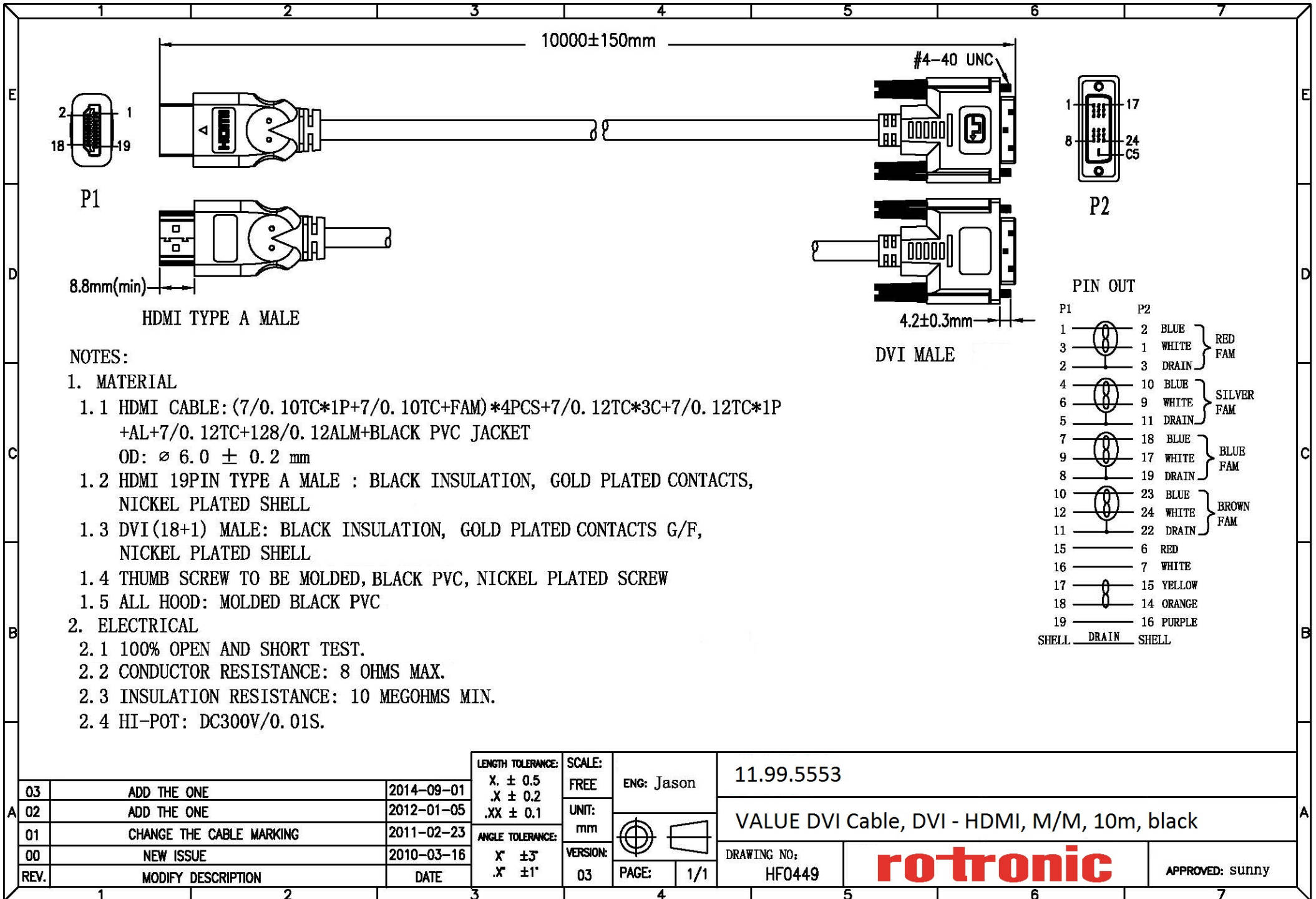
11.99.5553



VALUE Kabel DVI (18+1) ST - HDMI ST, 10 m

VALUE Câble de raccordement pour écran DVI (18+1) M /HDMI M, 10 m

VALUE Monitor Cable, DVI (18+1) - HDMI, M/M, 10 m



HDMI TYPE A MALE

DVI MALE

PIN OUT

P1	P2	Color	Group
1	2	BLUE	RED FAM
3	1	WHITE	
2	3	DRAIN	
4	10	BLUE	SILVER FAM
6	9	WHITE	
5	11	DRAIN	
7	18	BLUE	BLUE FAM
9	17	WHITE	
8	19	DRAIN	
10	23	BLUE	BROWN FAM
12	24	WHITE	
11	22	DRAIN	
15	6	RED	
16	7	WHITE	
17	15	YELLOW	
18	14	ORANGE	
19	16	PURPLE	
SHELL	DRAIN	SHELL	

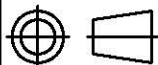
NOTES:

1. MATERIAL

- 1.1 HDMI CABLE: (7/0.10TC*1P+7/0.10TC+FAM)*4PCS+7/0.12TC*3C+7/0.12TC*1P +AL+7/0.12TC+128/0.12ALM+BLACK PVC JACKET
OD: $\varnothing 6.0 \pm 0.2$ mm
- 1.2 HDMI 19PIN TYPE A MALE : BLACK INSULATION, GOLD PLATED CONTACTS, NICKEL PLATED SHELL
- 1.3 DVI(18+1) MALE: BLACK INSULATION, GOLD PLATED CONTACTS G/F, NICKEL PLATED SHELL
- 1.4 THUMB SCREW TO BE MOLDED, BLACK PVC, NICKEL PLATED SCREW
- 1.5 ALL HOOD: MOLDED BLACK PVC

2. ELECTRICAL

- 2.1 100% OPEN AND SHORT TEST.
- 2.2 CONDUCTOR RESISTANCE: 8 OHMS MAX.
- 2.3 INSULATION RESISTANCE: 10 MEGOHMS MIN.
- 2.4 HI-POT: DC300V/0.01S.

LENGTH TOLERANCE:	SCALE:	ENG: Jason	11.99.5553
X. ± 0.5 .X ± 0.2 .XX ± 0.1	FREE		
ANGLE TOLERANCE:	UNIT:		VALUE DVI Cable, DVI - HDMI, M/M, 10m, black
X' $\pm 3^\circ$.X' $\pm 1^\circ$	mm		
VERSION:	PAGE:	03	1/1

DRAWING NO:
HF0449

ro-tronic

APPROVED: sunny

03	ADD THE ONE	2014-09-01
02	ADD THE ONE	2012-01-05
01	CHANGE THE CABLE MARKING	2011-02-23
00	NEW ISSUE	2010-03-16
REV.	MODIFY DESCRIPTION	DATE